



# Innovative Solutions for Culinary Excellence



Powered by



[www.jinoxkitchens.com](http://www.jinoxkitchens.com)

## Company Overview:

Janshakti Industries is one of the leading kitchen equipment manufacturers in Gujarat (India). We excel at providing the highest quality kitchen equipment and turnkey solutions according to your requirements. Timely execution is always taken care of by a team of experts who have been working in the industry for years.

We have a dedicated team for all the after-sales services. Our 360-degree turnkey solutions are convenient for the client since we take care of the project from scratch to the final execution. Jinox, a premium brand under Janshakti, specializes in high-end, Western-style food service equipment, offering innovative solutions designed for professional kitchens and culinary excellence.

## State-of-the-art Infrastructure

QSR Equipment Manufacturing Area: 3000 Sq.ft.

CNC Bending Machine

Office & Showroom Area: 10000 Sq.ft.

Laser Cutting Machine

Manufacturing Unit Area: 16000 Sq.ft.

Product Designing Facilities

Laser Welding Machine

Stud Welding Machine

Experience Center Area : 1500 Sq.ft.

## Why Us?



Quality Steel Gauge



Expert Supervision



Trust & Transparency



Great After- Sales Service



Client Satisfaction



Total Turnkey Solution



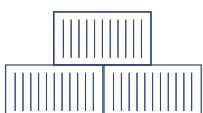
Value for money



Highly Trained People



Timely Delivery



# TWO BURNER RANGE



**Cabinet Style**



**Knock Down Style**

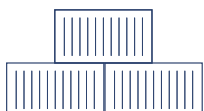


**Countertop Style**

## Features:

- This robust cast iron is engineered for regular daily use, ensuring longevity that spans many years.
- Includes dirt collection tray.
- Battery-ignited pilot burners.
- Safety features include thermocouple with flame failure device.
- Customization is available upon request.
- CSA certified valves.
- All exterior construction made of AISI 304 grade in matte finish.

No.	Variants	Model No.	Size(mm)	Cooking Zone(mm)	Gas Type	Burner(KW)
1.	Cabinet Model	2B-4575-C	450 × 750 × 850 + 100	300 × 300 × 2 Qty	LPG / NG	8.5 KW – F 12 KW – B
2.	Knock-Down Model	2B-4575-KD	450 × 750 × 850 + 100			
3.	Countertop Model	2B-4575-CT	450 × 750 × 295 + 100			



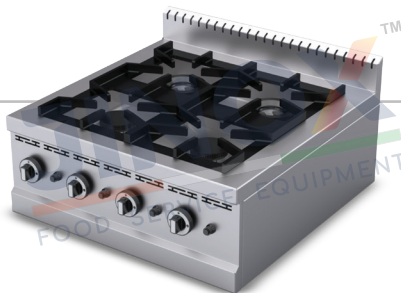
# FOUR BURNER RANGE



**Cabinet Style**



**Knock Down Style**

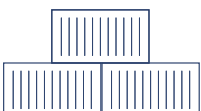


**Countertop Style**

## Features:

- This robust cast iron is engineered for regular daily use, ensuring longevity that spans many years.
- Includes dirt collection tray.
- Battery-ignited pilot burners.
- Safety features include thermocouple with flame failure device.
- Customization is available upon request.
- CSA certified valves.
- All exterior construction made of AISI 304 grade in matte finish.

No.	Variants	Model No.	Size(mm)	Cooking Zone(mm)	Gas Type	Burner(KW)
1.	Cabinet Model	4B-4575-C	750 × 750 × 850 + 100	300 × 300 x 4 Qty	LPG / NG	2 × 8.5 KW – F 2 × 12 KW – B
2.	Knock-Down Model	4B-4575-KD	750 × 750 × 850 + 100			
3.	Countertop Model	4B-4575-CT	750 × 750 × 295 + 100			





# HOT PLATE



**Cabinet Style**



**Knock Down Style**

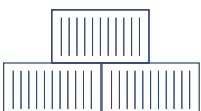


**Countertop Style**

## Features:

- Battery-ignited pilot burners.
- Safety features include thermocouple with flame failure device.
- CSA certified valves.
- Powered with a 8.5 kW tubular burner.
- Griddle is made of 12 mm thick steel SS 304.
- Includes dirt collection tray.
- All exterior construction made of AISI 304 grade in matte finish.
- Customization is available upon request.

No.	Variants	Model No.	Size(mm)	Burner(KW)	Cooking Zone (mm)
1.	Cabinet Model	HP-7575-C	750 × 750 × 850 + 100	8.5 KW x 2 Qty	610 × 595 × 12
2.	Knock-Down Model	HP-7575-KD	750 × 750 × 850 + 100		
3.	Countertop Model	HP-7575-CT	750 × 750 × 295 + 100		
4.	Cabinet Model	HP-1075-C	1050 × 750 × 850 + 100	8.5 KW x 3 Qty	910 × 595 × 12
5.	Knock-Down Model	HP-1075-KD	1050 × 750 × 850 + 100		
6.	Countertop Model	HP-1075-CT	1050 × 750 × 295 + 100		

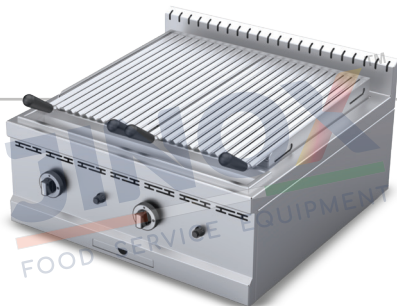




**Cabinet Style**



**Knock Down Style**

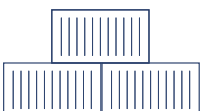


**Countertop Style**

## Features:

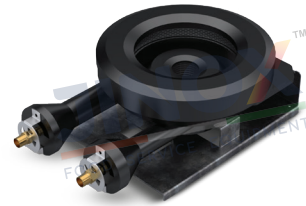
- All exterior made from AISI 304 grade stainless steel in matte finish.
- Cooking Grill made from AISI 304 grade SS with handles.
- Powered by Tubular Burner with flame protection cover.
- Lava Stone Holding Tray made of 14 mm SS bar with handles for superior durability.
- Two separate drip trays for dirt and oil collection.
- Powered with a 8.5 kW tubular burner.
- Includes Lava Stones.
- Customization is available upon request.
- CSA Certified Valves.
- Safety features include thermocouple with flame failure device.
- Battery-ignited pilot burners.

No.	Variants	Model No.	Size(mm)	Burner(KW)	Grill Zone(mm)
1.	Cabinet Model	LG-7575-C	750 × 750 × 850 + 100	8.5 KW x 2 Qty	650 × 530
2.	Knock-Down Model	LG-7575-KD	750 × 750 × 850 + 100		
3.	Countertop Model	LG-7575-CT	750 × 750 × 295 + 100		
4.	Cabinet Model	LG-1075-C	1050 × 750 × 850 + 100	8.5 KW x 3 Qty	950 × 530
5.	Knock-Down Model	LG-1075-KD	1050 × 750 × 850 + 100		
6.	Countertop Model	LG-1075-CT	1050 × 750 × 295 + 100		

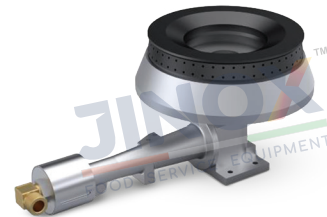




**Stock Pot**



**Dual Ring Burner**



**Regular Burner**

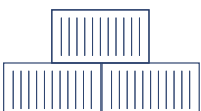
## Features:

- This robust cast iron is engineered for regular daily use, ensuring longevity that spans many years.
- Battery-ignited pilot burners.
- Safety features include a thermocouple with flame failure device.
- Customization is available upon request.
- Replaceable ribbon burner design reduces maintenance cost.
- CSA Certified Valves.
- All exterior construction is made of AISI 304 Grade in matte finish.
- Includes dirt collection tray.

Model No.	Dimensions(mm)	Burner Type	Gas Type	Burner(KW)	Grid Size(mm)
ST-6565	650 × 650 × 450	Dual Ring	LPG / NG	13 KW	450 × 450
ST-6060	600 × 600 × 450	Regular	LPG / NG	12 KW	450 × 450

## Special Feature of Dual Ring Burner:

- Safety valve provides five-level flame control of both inner and outer rings, which are more user-friendly with flame failure protection.
- High combustion efficiency: 30% higher than traditional Burner which saves energy.





# JANSHAKTI®

Professional Kitchen Experts

## Our Brands:

**HOTPRO™**  
COOK WITH COMFORT

**FROSTPRO®**  
Hospitality Cooling Experts

**DRAINPRO®**  
Commercial Drainage Solutions

**JINOX™**  
FOOD SERVICE EQUIPMENT

## Office & Showroom :

49, Chirag Diamond Estate, Beside Pushkar  
Business Park, Near D-Mart, Bapunagar,  
Ahmedabad-24, Gujarat 380038.

## Works :

Bakrol Bujrang, Ahmedabad, Gujarat 382433.

✉ [exports@janshaktiindia.com](mailto:exports@janshaktiindia.com)

🌐 [www.jinoxkitchens.com](http://www.jinoxkitchens.com)

☎ +91 9574001797 / 9974537373



Scan to Download  
Brochures

Dealer / Export / OEM Enquiries are solicited.